

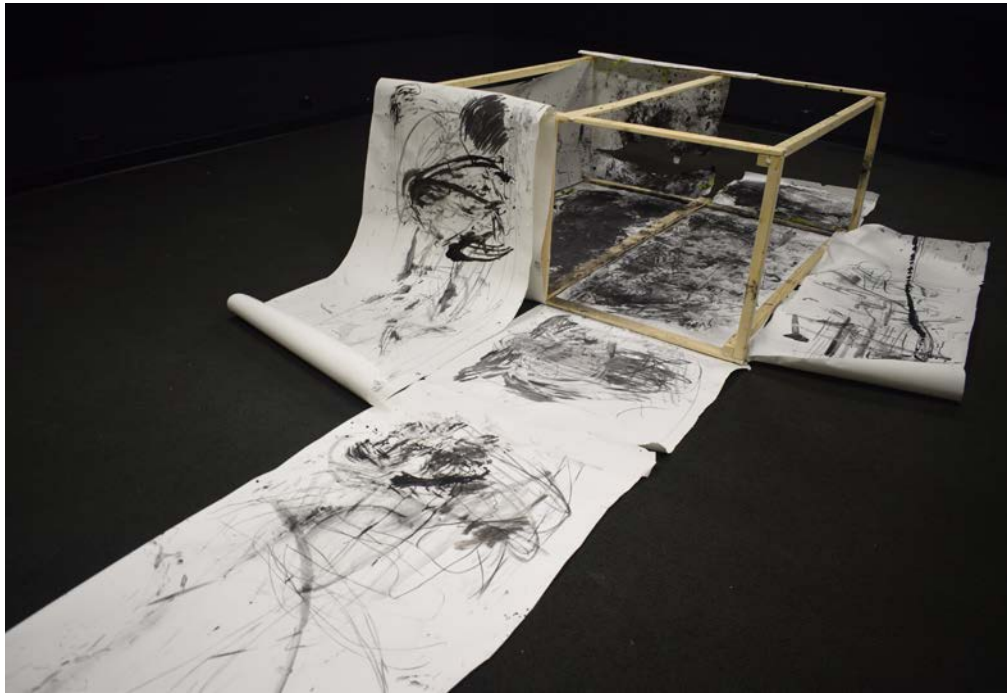
Rita Adib

Multidisciplinary Artist

Performances

I Fear White Paper
2017
Documented performance
White paper, wood, charcoal, ink





The idea behind this action is to create a space to occupy within a limitless time span.

I built a white cubicle made of a wood structure covered with paper, I entered it with drawing materials and without a device to tell time.

The experiment lasted two hours.

On the inside, the sound of charcoal on paper was loud and the white paper felt intimidating.

I played, sang, drew, wiggled the cubicle and fell with it. I landed and laid down in it rubbing my body against the paper full of charcoal.

White paper didn't feel any less scary. I stepped out.

As chaotic as the paper turned on the inside, the camera only captured silent whiteness.

More documentation: <https://www.ritaadib.com/i-fear-white-paper>

Package Deal

2018

Video Performance

Wood, Plastic Wrap, Black paint

The performance is done in response to love letters written by a group of LGBTQ arab individuals to themselves at the end of a creative writing workshop. These letters explore their life experiences and the journey of accepting oneself. The culmination moment of these letters is what inspired the performance. It is the moment where the writers embrace the self with its flaws until their wholeness is no longer a burden.

Video documentation: <https://www.ritaadib.com/package-deal>



On the Verge of Love

2018

Time-lapse of self-documented action
20 Minutes

Red balloon, charcoal, air pump

I have asked myself relentlessly; Will it ever be possible to cope with the consequential feelings of living love and war at once?

In response to this question and thinking of love nourishment as a sanity sustainer and/ or a reminder of being alive, I performed this action where I inflate the red balloon waiting for the ticking moment of its certain explosion.



Installations and Sculptures



Seesaw

2020

Interactive performative sculpture

Metal, Wood

Seesaw is an interactive public installation. Inspired by children's playground and early taught power dynamic and transferred to an adult social essential act, this project addresses power, trust, and care.

This project was produced during La Coulee residency program 2020. Permanently installed at Batiment7. Montreal, Canada.

Video documentation: <https://www.ritaadib.com/b7-seesaw-picnictable>



In Memory of Patriarchy

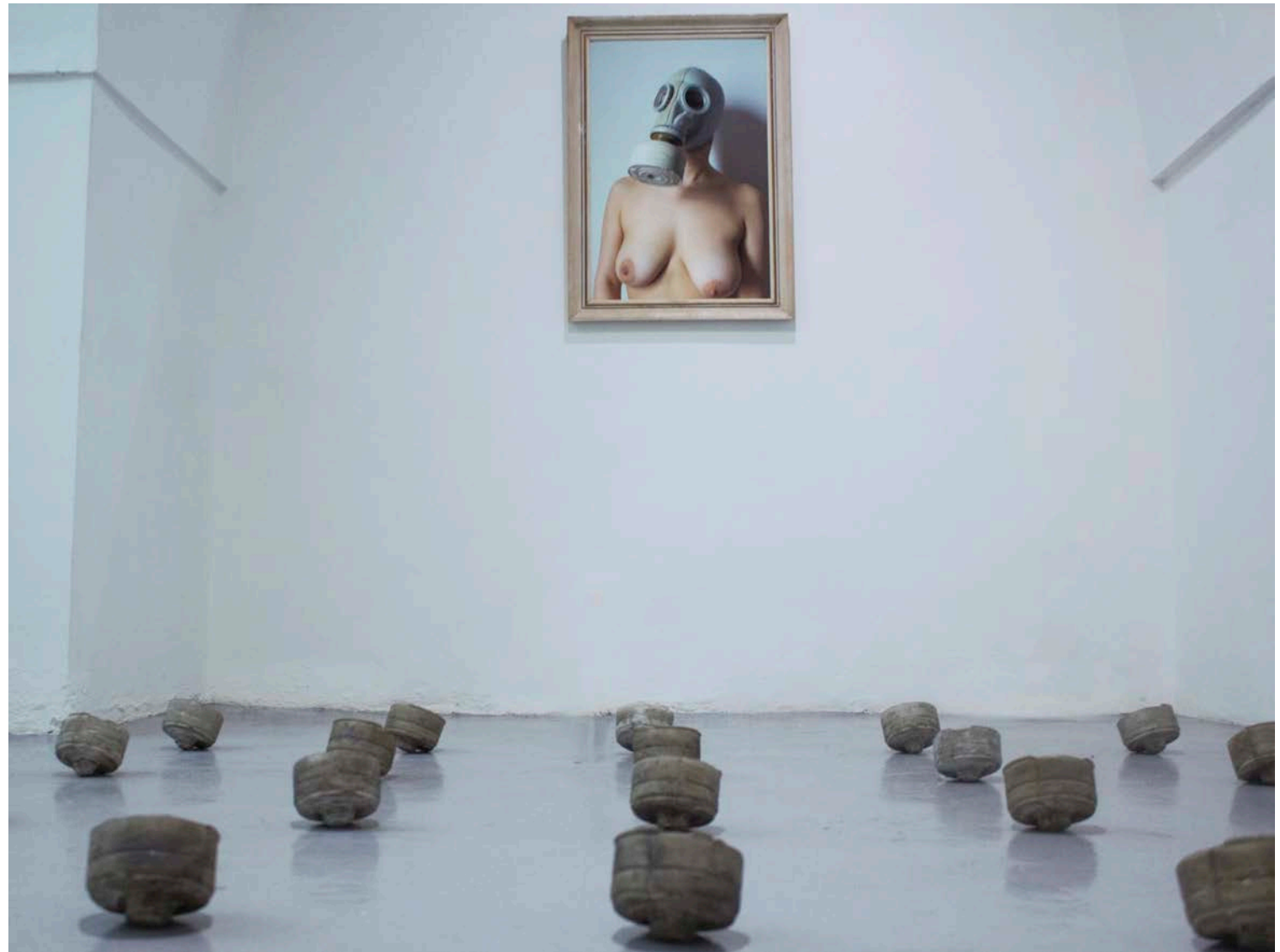
2019

Mixed media installation

Cement, photograph, found wood frame

This installation is extracted from memories of my upbringing under the authority of a military regime.

I recall these moments and the accompanying suffocation and stillness that came with.





Crown
2019
Still sculpture
Bronze, Wood, Rope

"Crown" is a variation of the carrot and stick metaphor. The man is following the golden mustache around, a symbol of patriarchy and supposed "manhood".



Bridle
2019
Performative sculpture
Metal, Bronze, Rope

A headpiece mimicking "scold's bridle": a metal instrument used for punishment, torture, and public humiliation of a woman in the 16th century.



Bride and groom

2019

13 x 13 x 22cm

Bronze, wood, found object (plastic wedding topper)

The series examines socially constructed gender roles and the figure of toxic masculinity as a creature that is on its way to becoming extinct.



Ground above ground

2018

Site Responsive installation 250 x 152 x 30 cm

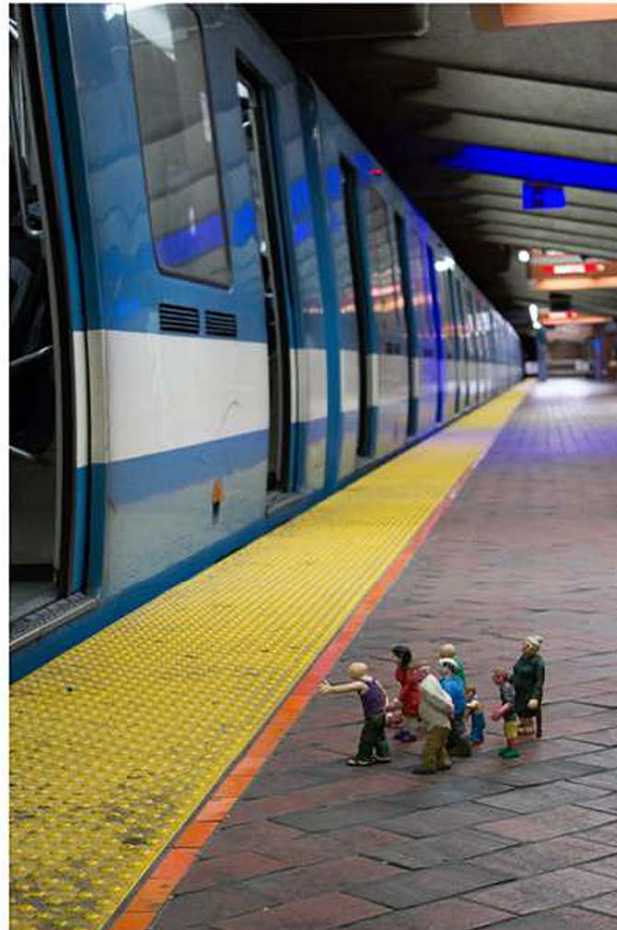
Cement, metal, light, plastic wrap, sand

TheWall
2017 - 2018
Public Sculpture 90 x 170 x 20cm
Cement, metal



Winner of "Outdoor Sculpture Competition" - Concordia University





The Journey

2015

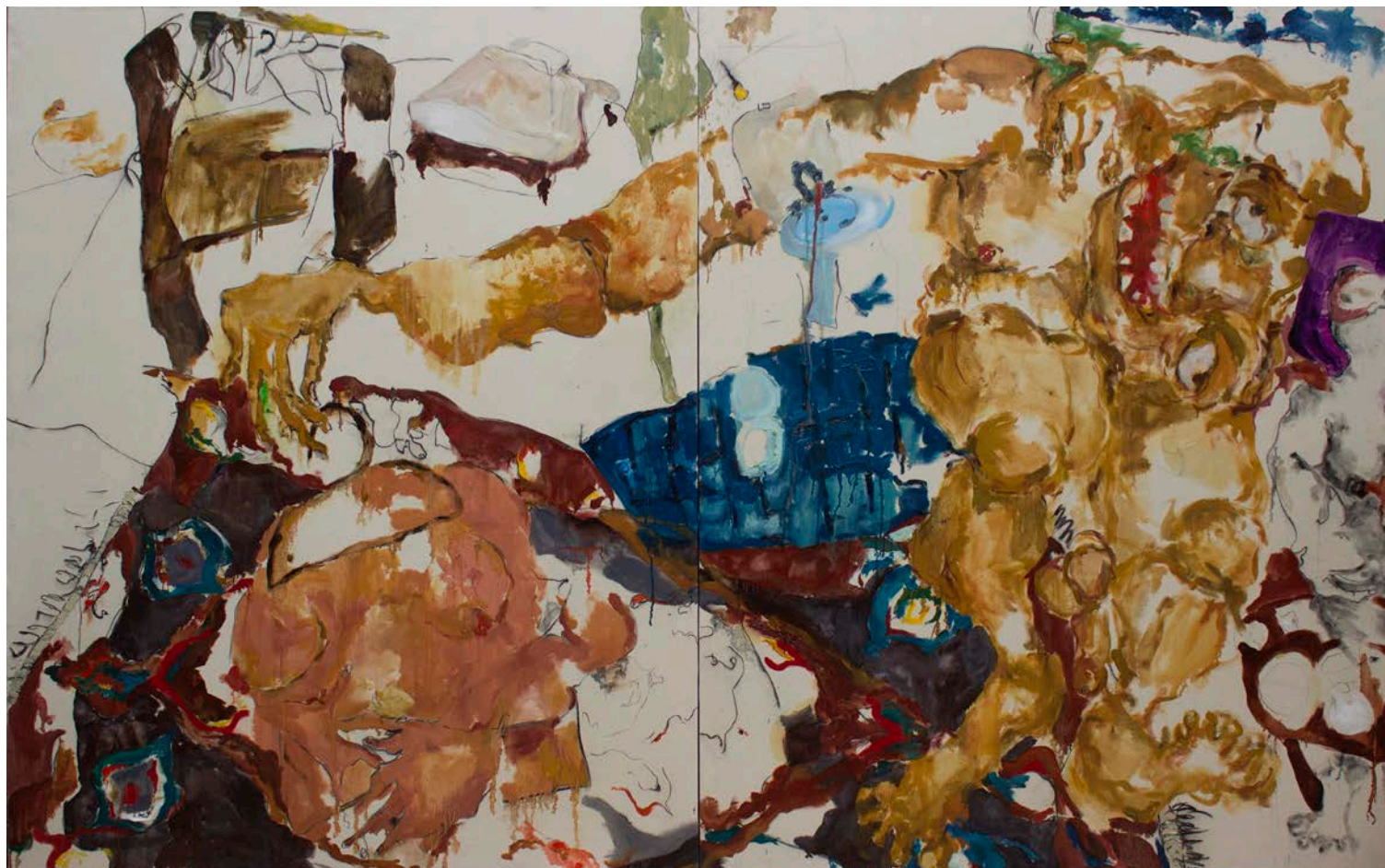
Sculpture intervention documented photographs

Plasticine, metal armature



Paintings

Hangers
2019
Oil on canvas
(diptych) 152x 244cm



Pickels
2018
Oil on canvas
120 x 120 cm



After La Dance
2019
Oil on canvas
120 x 182 cm





Circus
2019
Oil on canvas
152 x 120 cm

Only child
2019
Oil on canvas
90 x 152 cm



www.ritaadib.com
rita.adib191@gmail.com