

# “Time and Space” Cappadocia, Turkey

**Andrew Rogers**

We perceive our existence in space and time; we are here now and life is current but in this world where technology is constantly advancing, human nature is not. It is often the values of the past that are most relevant today.

Geoglyphs can be contemplated from two points of view - the mythological subject and that of the beautifully constructed gigantic form which requires a concentration of great ingenuity to bring into being a form from which springs new life.

We are carried over great time and space from ancient cultures and civilizations. It is an exploration of meanings and powers from the past and their meaning for the future. From an artifact of an ancient culture that has meanings and powers from the past, through to the unspoilt vistas that has meaning for the future.

These structures invite the viewer to search amongst these twelve gigantic forms which create their own dimensions and find themselves in a special place that has been created.

A purpose of the structures is to establish consecrated space and denote separation from the ordinary. They provide contemplative settings for reflection and take us into the domain of speculation.

“Time and Space” the largest contemporary land art park in the world. Twelve major structures, some built by hand. The lines of these structures measure approximately 7 kilometres (4 miles) in length and comprise more than 10,500 tons of stone. The tallest structure is 19.5 metres (64ft) high.

What’s different about this collection of works in Turkey is that on the basalt structures I am ascribing values and engraving virtues into stone. Each structure carries a message like all the *Rhythms of Life* structures - they’re about an idea not about the structure.

Lots of people have drawn on the earth, but conceptually this is different because here in Turkey these structures or drawings on the ground are part of a set of connected drawings on the surface of the Earth. These structures address the cycle of life and the interconnection of humanity throughout time and space.

These structures are best viewed from above such as from a hot air balloon. The structures that lie furthest apart are separated by a distance of 2.5 kilometres (1.5 miles).

Unique is an intent of this undertaking to have these connected drawings on the earth photographed by specifically commissioned satellites from a distance of 450 kilometres (280 miles) above the Earth revealing the structures as specks in space and a moment in time.







### **Grind**

This millstone is derived from an ancient millstone that belonged to the elders of the town of Goreme.

100m x 100m (330ft x 330 ft).  
Total length of walls 782m (2,565ft)



### **Strength**

This double bodied lion is derived from an image located in the Sultanhanı Township within Aksaray, on the Konya-Aksaray road. It is understood from its inscription to have been built by the Seljuk Sultan Alaaddin Keykubat I and its architect to be Muhammed bin Havlan el Dimişki.

100m x 50m (330ft x 165ft).  
Total length of walls 830m (2,723 ft)



### **Sustenance**

The tree carved on the Kayseri döner kümbet represents the date palm tree, which grows in the Middle-eastern countries.

This motif is found on a tomb on the Kayseri Talas road which was built in the name of Princess Sah Cihan Hatun in the thirteenth century.

100m x 100m (330ft x 330 ft).  
Total length of walls 897m (2,942ft)



### **Siren**

The siren, with a human head and the body of a bird, is from Greek mythology also appearing in the shamanistic beliefs as bird-like creatures accompanying humans in their journeys to the underworld and the heavens.

65m x 100m (213 ft x 330 ft)  
Total length of walls 992m (3,255ft)





### ***Time and Space***

A spectacular Fibonacci sequence of basalt columns located on the edge of a cliff. It is comprised of 12 basalt pillars approximately six metres (18ft) tall, each weighing approximately 10 tons. The tallest column is highlighted in 23-carat gold to reflect the message with the rising and setting sun. The sequence is laid out around the circumference of an ellipse alluding to the trajectories of the planets moving around the sun. It is a vision of time and space and the interconnectedness of humanity.

The Fibonacci sequence is demonstrated both in terms of height and spacing.

The maths of a Fibonacci sequence is 1 plus 1 equals 2, 1 plus 2 equals 3..., etc and that is the spacing between these columns and the variation in height.

This formula is used to explain cell growth. It can explain the swirls in a shell, or the growth patterns of various plants. It's all reflected in this mathematical formula.



24m L x 16m W and up to 5.3m H  
(79ft x 53ft x 18ft)



### ***The Gift***

This horse is derived from a 6000 year old rock carving and signifies the important role horses played in ancient times. The name of the area Cappadocia is based on the Persian word Katpatuka which means "Land of Beautiful Horses".

60m x 60m (197ft x 197ft)



### ***Rhythms of Life***

A dynamic structure that embodies the changing rhythms of life. These rhythms are reflected in the juxtaposition of shape and line echoing the unpredictable journey through life.

100m x 90m (330ft x 295ft)





### ***Predicting the Past***

The arch is an archetype of many ancient places; an entrance to pass through in either direction; on one side viewing the awe of the vista, and the other view pulling you back into the mystery of an ancient symbol and its mythology.

The arch is a transition through time and space, an arch of memory or a guardian of values that we need to pass on to future generations.

As a memorial to the future the arch is to remind us that we should not give up such precious values in the future that give us a sense of purpose in life.

The future is mixed with chance therefore it is hard to predict. This is why there is often a lack of continuity between the past and what went before it and the past relative to the future.

The arch is about not projecting another yesterday and it is about the difference between the past and the future, it is perhaps about the question, "What will be the future?"

A 15.5 ft high, 42 ton basalt arch.  
4.2m x 4.7m x 1.1m (14ft x 15.5ft x 3.6ft)

### ***Yesterday Today Tomorrow***

*Life goes on ...*

A triangular formation surrounded by a circle of stone.

Three basalt columns, 6m (19.7ft) high



### ***Sentinels***

*Sentinels of responsibility for generations to come ...*

8 basalt columns

6m in height (approximately)





***Listen***

*Listen to the silence of the land ...*

A giant basalt arch (the height of a 4 storey high building) and an amphitheatre carved from the natural rock.

Arch - 14.5m high (52 ft)







## ***A Day On Earth***

The twelfth structure is a colonnade of contemporary street ruins comprising twelve 9-metre high basalt columns, each weighing 23 tons and inscribed with words of aspiration and values.

The Golden Section, 1:1.618, is a mathematical ratio which goes back to the ancient Greeks, and has since been used in art and architecture from the Parthenon to modern buildings like the United Nations headquarters.

The Golden Section is represented twice in this structure. Firstly between the width and length of the outer dimensions - 31.5 metres by 51 metres; and secondly between the height of the columns and the width of the street - 9.0 metres by 12.5 metres.

*"A Day On Earth"* is about the fragility of life and society and values inscribed on each column imbued with meaning and a deep yearning of every person - liberty, justice, integrity, truth, respect, peace, freedom, quiet, hope, optimism, history, heritage, tolerance, beauty, joy, rights, love, responsibilities, faith, compassion, goodness, kindness.

The colonnade ends at an altar of contemplation and contains a 19.5m (64ft) tall archway signifying the importance of memory.

31.5m x 51m x 9m  
(103.35ft x 167.32ft x 29.53ft)



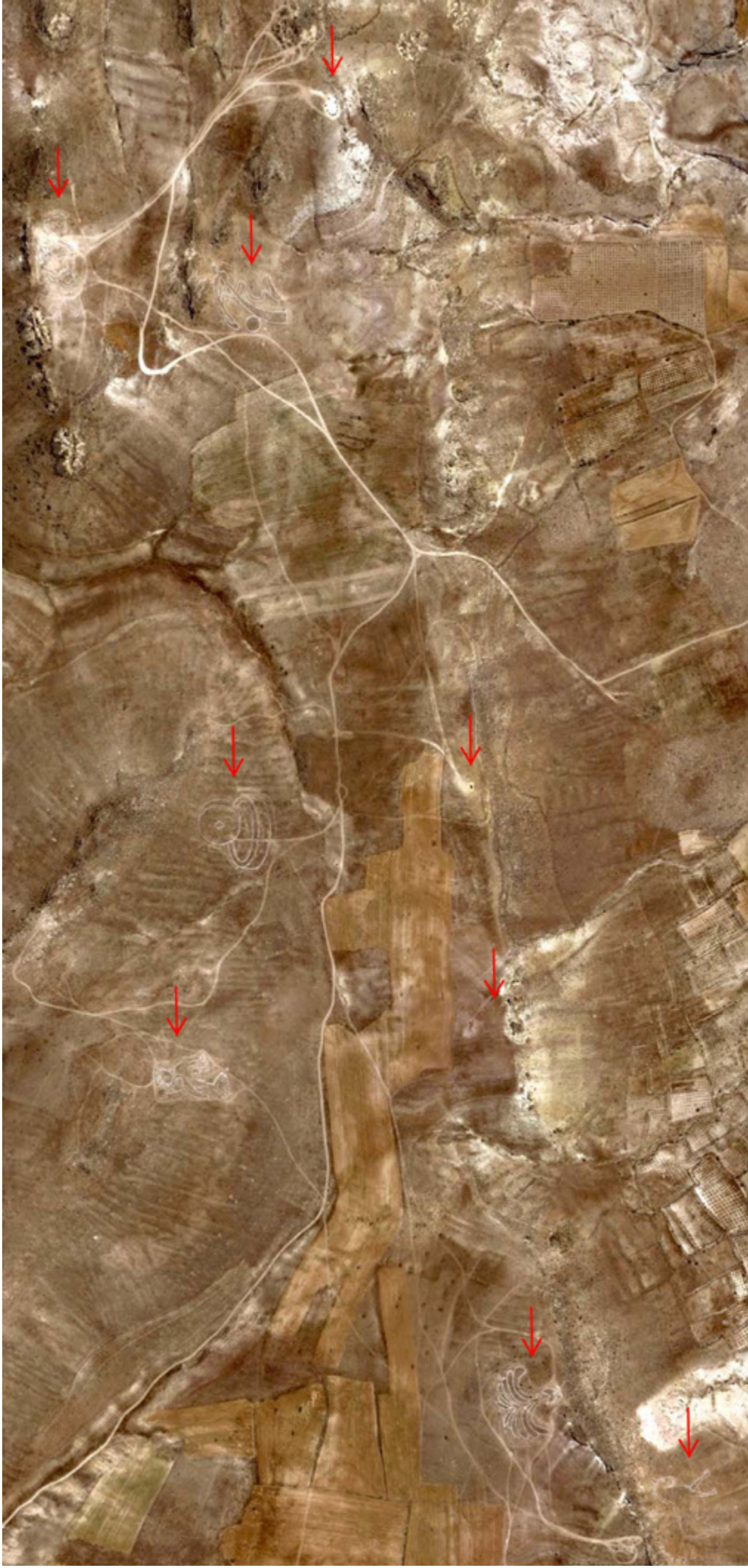




***Arch of Memory “...for without memory, we are nothing...”***

A giant basalt arch 19.5m high (64ft) - each of the upright columns weighs over 84 tons.

The lintel weighs 32 tons. Completed July 2011.



Satellite image – ‘Time and Space’  
Rhythms of Life  
Photographed 279 miles (450km) above the earth’s surface  
34 deg 47” 48.402 deg E  
38 deg 41” 22.854 deg N